



Hillcot Pikes Hill Lyndhurst

£2,000 PCM

A newly decorated and well-presented three-bedroom rural home, located in the charming village of Lyndhurst, offering spacious accommodation over two floors, off-road parking, a garage for use, and private outdoor space. To rent this property, applicants will need a household income of at least £60,000. The total deposit required is £2,307.00, with a holding deposit of £461.00.



- Popular Location of Lyndhurst • Gas Central Heating • Council Tax Band D • Newly Decorated Throughout • Detached Garage • Private Driveway

A newly decorated, well-presented and spacious three-bedroom rural home, located in the charming village of Lyndhurst and arranged over two floors.

The ground floor comprises a welcoming entrance hallway with useful under-stairs storage, a generous lounge to the front of the property featuring a gas fire, and a separate dining room providing an ideal space for entertaining. To the rear is a fitted kitchen complete with a washing machine, dishwasher and fridge/freezer, offering ample worktop and cupboard space and convenient access to the dining area.

To the first floor, the property benefits from three well-proportioned bedrooms, including a spacious master bedroom, a further double bedroom, and a good-sized single bedroom. A modern family bathroom completes the upstairs accommodation.

Externally, the property offers a private, low-maintenance rear patio garden, a garage for use, and a driveway providing off-road parking. There is also a patio area to the front of the property, ideal for enjoying the village setting.

The property's construction is brick and tile.

The property has mains gas central heating, an electricity supply, mains water and mains drainage.

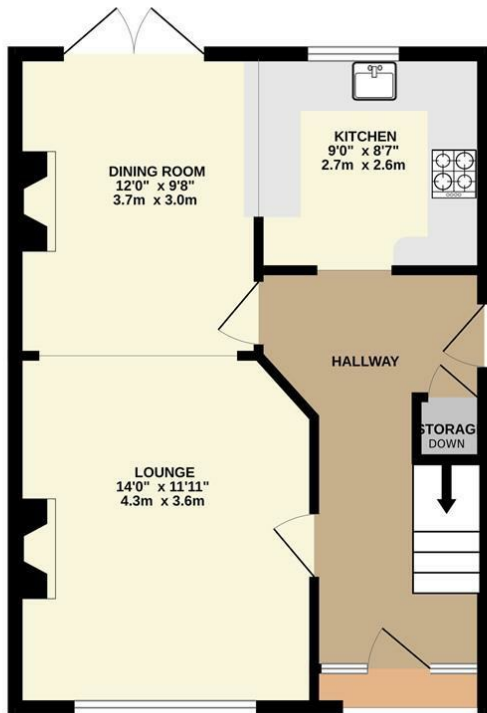
The broadband and mobile availability can be checked via the Ofcom's "broadband and mobile coverage checker" on their website.

ADDITIONAL INFORMATION

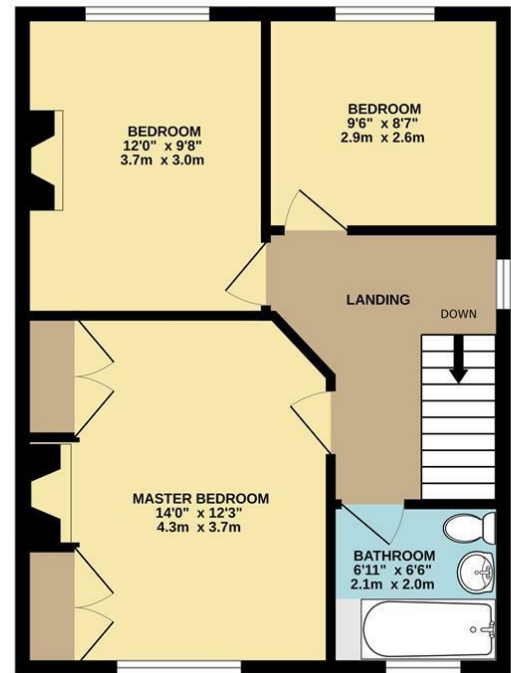
Council tax band: D Furnishing Type: Unfurnished Security Deposit: £2,307 Available From: 9th February 2026



GROUND FLOOR
475 sq.ft. (44.1 sq.m.) approx.



1ST FLOOR
486 sq.ft. (45.2 sq.m.) approx.



TOTAL FLOOR AREA : 961 sq.ft. (89.3 sq.m.) approx.

Whilst every attempt has been made to ensure the accuracy of the floorplan contained here, measurements of doors, windows, rooms and any other items are approximate and no responsibility is taken for any error, omission or mis-statement. This plan is for illustrative purposes only and should be used as such by any prospective purchaser. The services, systems and appliances shown have not been tested and no guarantee as to their operability or efficiency can be given.
Made with Metropix ©2026



Energy Efficiency Rating

	Current	Potential
Very energy efficient - lower running costs		
(92 plus) A		
(81-91) B		81
(69-80) C		
(55-68) D	64	
(39-54) E		
(21-38) F		
(1-20) G		
Not energy efficient - higher running costs		
England & Wales		EU Directive

Agents Note: Whilst every care has been taken to prepare these particulars, they are for guidance purposes only. All measurements are approximate and are for general guidance purposes only and whilst every care has been taken to ensure their accuracy, they should not be relied upon and potential buyers/tenants are advised to recheck the measurements.



SPENCERS

LETTINGS

ABOUT US

Spencers' lettings office offers a dedicated, specialist lettings service with every aspect managed in-house, from maintenance to property inspections. The team undergo regular training to keep on top of continually changing legislation and are frequently praised by landlords and tenants for their friendly professionalism, thoroughness and reliability. The office works closely with Spencers' estate agency offices and broadly covers the New Forest area including Lymington and Lyndhurst, Romsey and Totten, Beaulieu, Ringwood, Brockenhurst, Burley and the Christchurch area including Highcliffe and Barton on Sea.



CONTACT US

Lymington 01794 331433

Highcliffe 01425 205000

Romsey 01794 331433

lettings@spencersproperty.co.uk

www.spencersproperty.com